

SC600

Smart CNC Solutions

*ADVANCED 45 DEGREE Y AXIS*

# TURNING CENTER

## SERIES WITH SUB SPINDLE



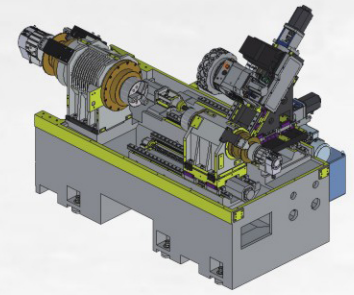
# ADVANCED TURNING CENTER

The SC600 adopts an advanced 45 degree Y axis structure which is the fundamental performance of rigidity and compactness.

The SC600 offers a standard chuck size of 8 inches for spindle 1 and 6 inches for spindle 2. The sub spindle specification enables continuous machining of both surfaces.

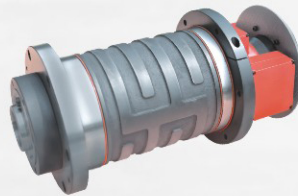
The combination of driven live tools and Y-axis function enables integrated machining from turning to secondary/back face machining, and multi-axis interpolation machining, allowing for process integration.

The model provides the 2- axis turning, the milling and the Y axis specification with various spindle and turret options. Customer can choose the "one-of-a-kind machine" that flexibly meet their own needs.



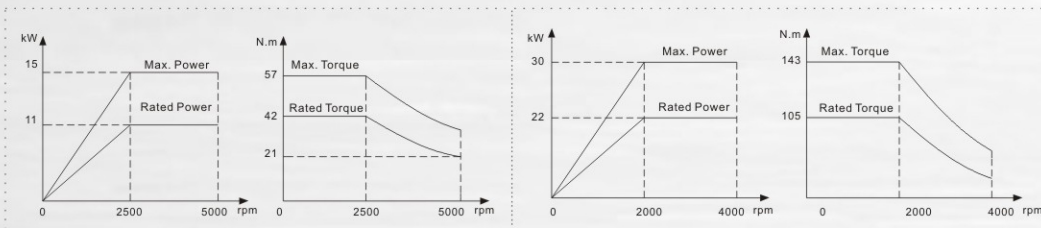
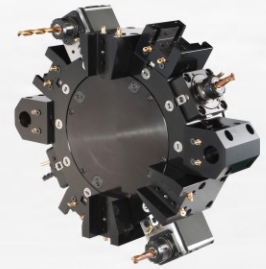
## Built-in Motor Spindle

**PMSM**(spindle permanent magnet synchronous motor) type Direct Driven Spindle provides high-precision C axis motion.



## BMT Turret

Less interference BMT type tool disc  
Servo driven, bi-directional and non-lifting.



## Specifications

	Unit	SC600
<b>Capacity</b>	Max. turning diameter	Φ400
	Max. length of workpiece	600
	Max. swing diam. over bed	Φ610
<b>Spindle</b>	Hydraulic chuck / Collet chuck	10
	Diam. of spindle bore	Φ66
	Max. diam. of through-hole	Φ52
	Spindle nose	A2-6
	Max. spindle speed	4000
	Main motor	22 kW
<b>Sub-Spindle</b>	Hydraulic chuck	8
	Diam. of spindle bore	Φ55
	Max. diam. of through-hole	Φ46
	Spindle nose	A2-6
	Max. spindle speed	5000
<b>Axis</b>	Main motor	11 kW
	X axis travel	240 mm
	Z1 axis travel	650 mm
	Z2 axis travel	630 mm
	Y axis travel	204 mm
<b>Feed Rate</b>	X/Z1/Z2/Y axis rapid traverse	24/30/30/10 m/min
	X/Z1/Z2/Y axis ballscrew	32×P08 / 32×P10 / 32×P10 / 32×P06 mm
	Cutting feed rate	10 m/min
<b>Turret</b>	Type of turret	BMT55
	No. of tool	12
	OD tool shank size	25×25 mm
	Boring tool shank size	Ø32 mm
	Live tooling motor	2.2/3.7 kW
	Max. speed of live tooling	5000 rpm
<b>*Tailstock</b>	Type of tailstock	Programmable
	Taper of tailstock quill	MT5
	Travel of tailstock	440 mm
<b>Others</b>	Weight (about)	6500 Kg
	Overall dimension (L×W×H)	3200×2000×2250 mm

Note: "\*" means optional

## Configurations

### Standard Features

- Hydraulic Chuck
- 12-Station Power Turret
- Work Lamp
- 3-color Indicator Lamp
- Auto Lubrication System
- Coolant System
- Fully Enclosed Guard
- Hydraulic System
- Air Conditioner of Electric Cabinet

### Optional Features

- Hydraulic Collet
- Chip Conveyor with Cart
- Extra Tool Holder
- Oil Mist Collector
- Oil Water Separator
- Parts Catcher
- Automatic Bar Feeder
- Automatic Tool Setter



STARMAC MACHINERY CO., LTD  
9F.-1, NO.237, ZHONGMING S. RD., WEST DIST.,  
TAICHUNG CITY, TAIWAN  
Email: sales@starmac.com.tw